



# The Search for District-Scale Au-Ag-Rich VMS Deposits in the Golden Triangle, British Columbia, Canada

**CORPORATE PRESENTATION**

TSX.V: ESK – USA.OTC: ESKYF – Frankfurt: KN7

**WINTER  
2023**

[eskaymining.com](http://eskaymining.com)

The data contained herein is provided for information purposes only. Certain information has been compiled from sources believed to be reliable. No information in this presentation is to be construed as an offer to buy or sell securities.

Some statements contained in this presentation are forward-looking and, therefore, involve uncertainties or risks that could cause actual results to differ materially. Such forward-looking statements include among other things, comments regarding mining and milling operations, mineral resource statements and exploration program performance. They may also include statements with respect to Eskay Mining's mineral discoveries, plans, outlook and business strategy. The words "may", "would", "could", "should", "will", "likely", "expect," "anticipate," "intend", "estimate", "plan", "forecast", "project" and "believe" or other similar words and phrases are intended to identify forward-looking information.

Factors that could cause actual results to differ materially include, but are not limited to, metal price volatility, economic and political events affecting metal supply and demand, fluctuations in mineralization grade, geological, technical, mining or processing problems, exploration programs and future results of exploration programs, future profitability and production, the ability to raise sufficient capital to fund exploration, litigation, legislative, environmental and other judicial, regulatory, political and competitive developments; technological or operational difficulties or inability to obtain permits encountered in connection with exploration activities; and labour relations matters.

This list is not exhaustive of the factors that may affect our forward-looking information. These and other factors should be considered carefully and readers should not place undue reliance on such forward-looking information. The Company disclaims any intention or obligation to update or revise forward-looking information, whether as a result of new information, future events or otherwise. The reader agrees to hold the Company and its subsidiaries, and their respective officers, employees and agents harmless against any claims for damages or cost or any loss of any kind arising out of the access to or use of this presentation or any information contained in or obtained through this presentation.

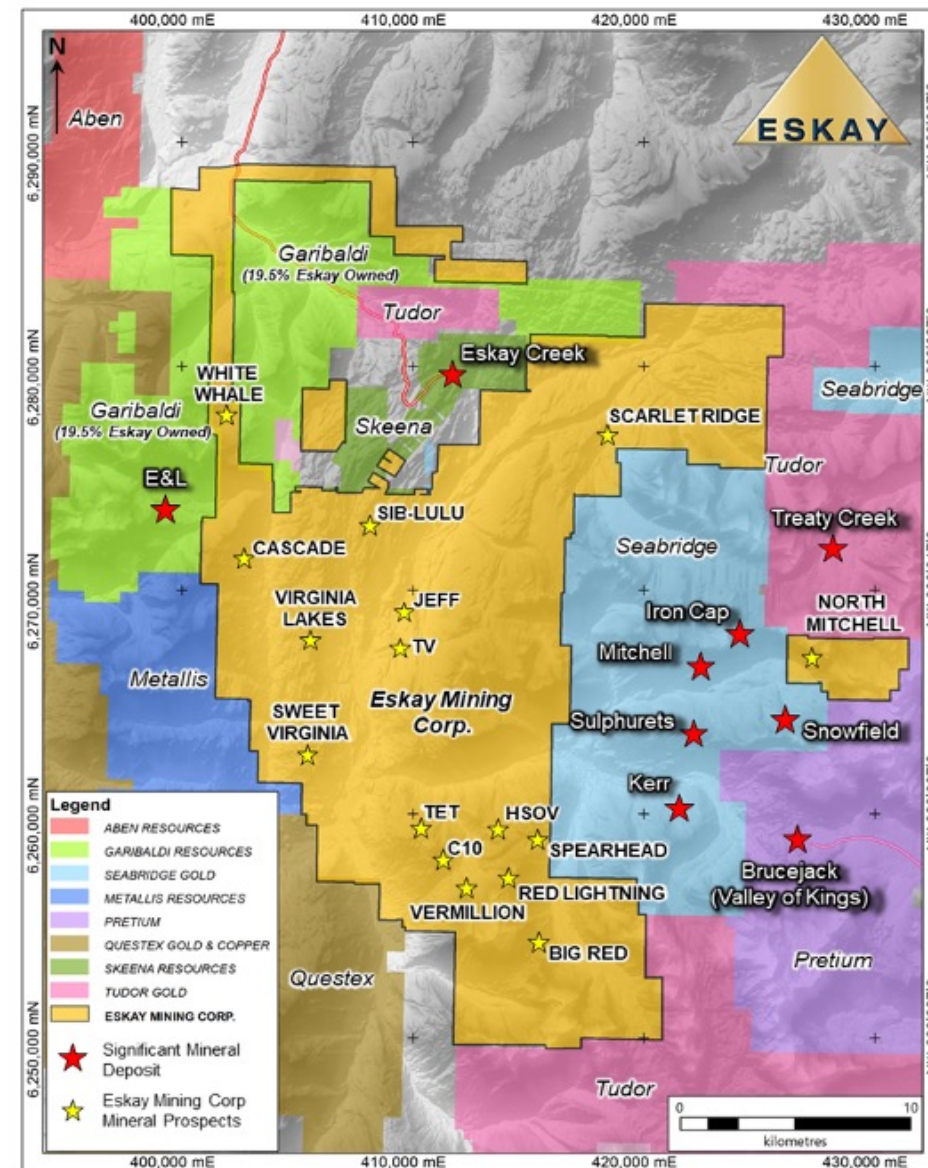
**Cautionary Note to United States Investors Concerning Estimates of Measured, Indicated and Inferred Resources:** These tables use the terms "Measured", "Indicated" and "Inferred" Resources. United States investors are advised that while such terms are recognized and required by Canadian regulations, the United States Securities and Exchange Commission does not recognize them. "Inferred Mineral Resources" have a great amount of uncertainty as to their existence, and as to their economic and legal feasibility. It cannot be assumed that all or any part of an Inferred Mineral Resource will ever be upgraded to a higher category. Under Canadian rules, estimates of Inferred Mineral Resources may not form the basis of feasibility or other economic studies. **United States investors are cautioned not to assume that all or any part of Measured or Indicated Mineral Resources will ever be converted into Mineral Reserves. United States investors are also cautioned not to assume that all or any part of an Inferred Mineral Resource exists, or is economically or legally mineable.**

Dr. Quinton Hennigh, P.Geo. is a qualified person as defined by NI43-101 and has reviewed the contents of this presentation.

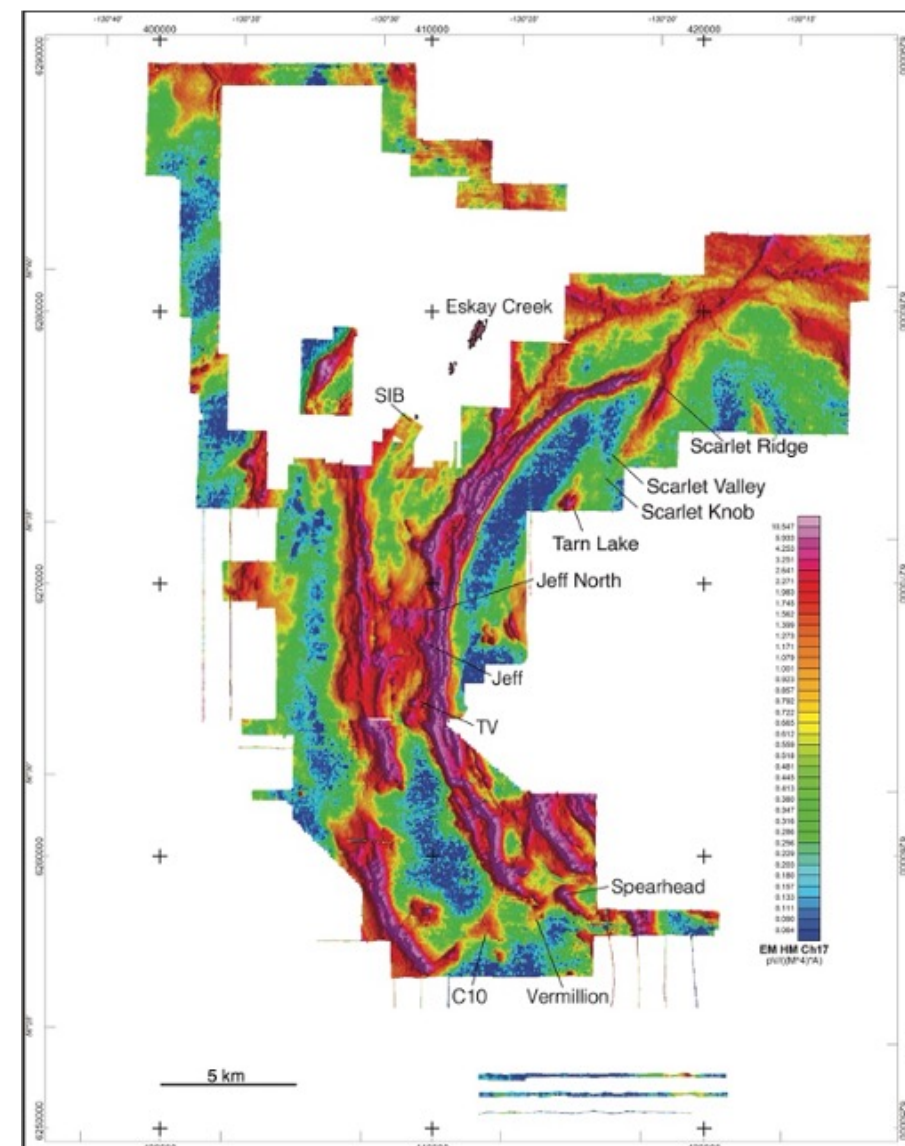
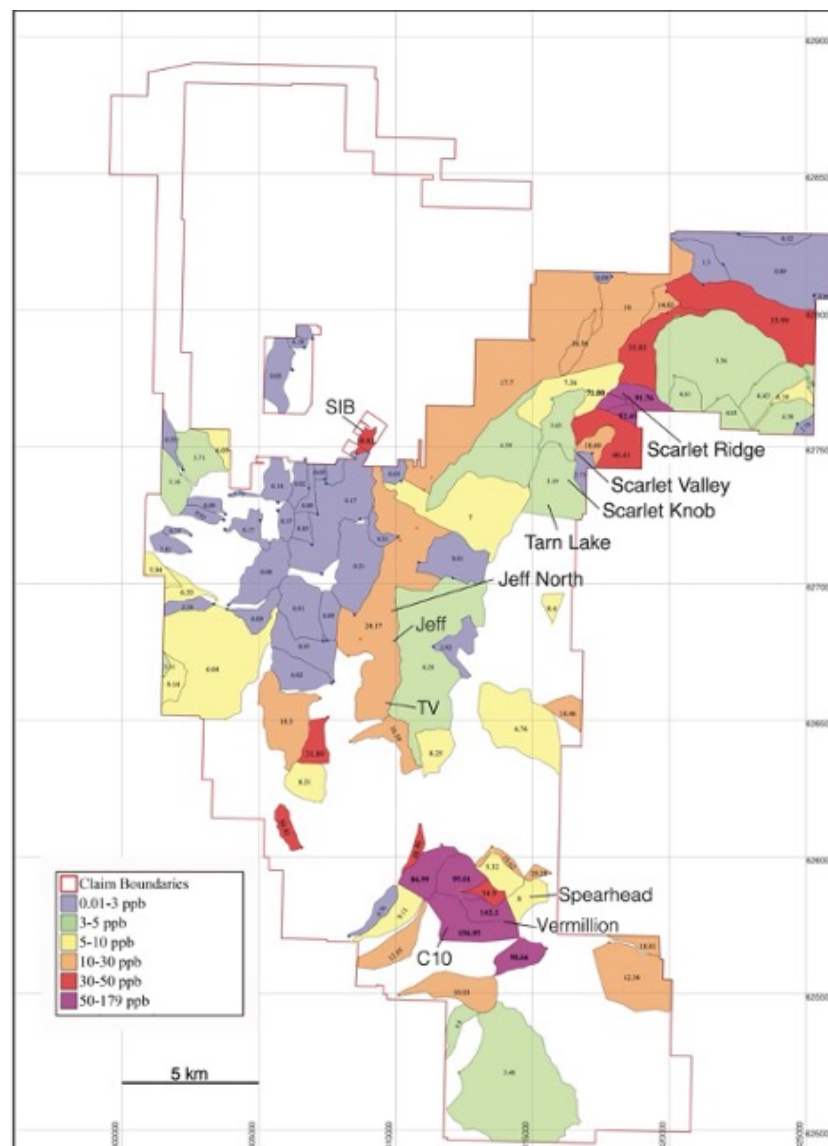
Capital Structure	
Company Tickers	TSXV:ESK   OTC:ESKYF   Frankfurt:KN7:GR
Closing Price (January 3rd, 2023)	\$1.00
52 Week Trading Range	\$0.66 - \$3.50
Shares Out (Basic)	183,617,123
Shares Out (FD)	203,006,065
Market Capitalization (Basic)	\$192.8M
Market Capitalization (FD)	\$213.2M



- In the heart of the Golden Triangle surrounded by world class Au and Ag deposits
- SIB-Lulu
  - A continuation of world-class Eskay Creek VMS trend on the west limb of the Eskay anticline
- TV-Jeff
  - A 4.0 km trend of Au-Ag enriched VMS systems on the east limb of the Eskay anticline
- Scarlet Ridge-Tarn Lake
  - 8.5 km trend of VMS mineralization to the east of Eskay Creek
- C10-Vermillion
  - VMS mineralization with likely orogenic overprint



- Very strong BLEG results
- VMS associated with conductivity anomalies
  - Six prospective horizons for VMS mineralization
- Potential for orogenic and porphyry deposits



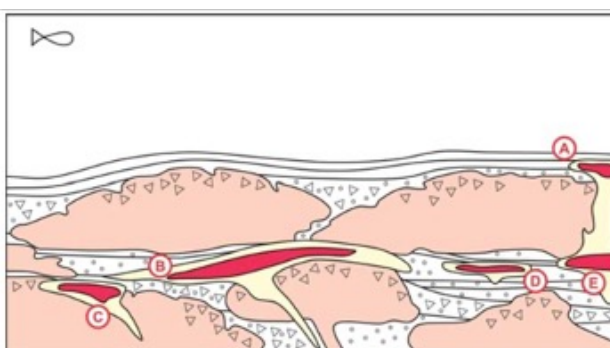
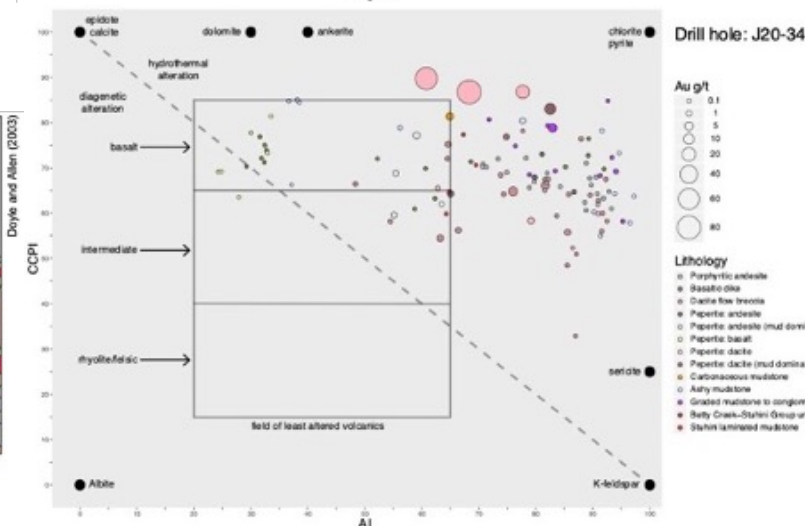
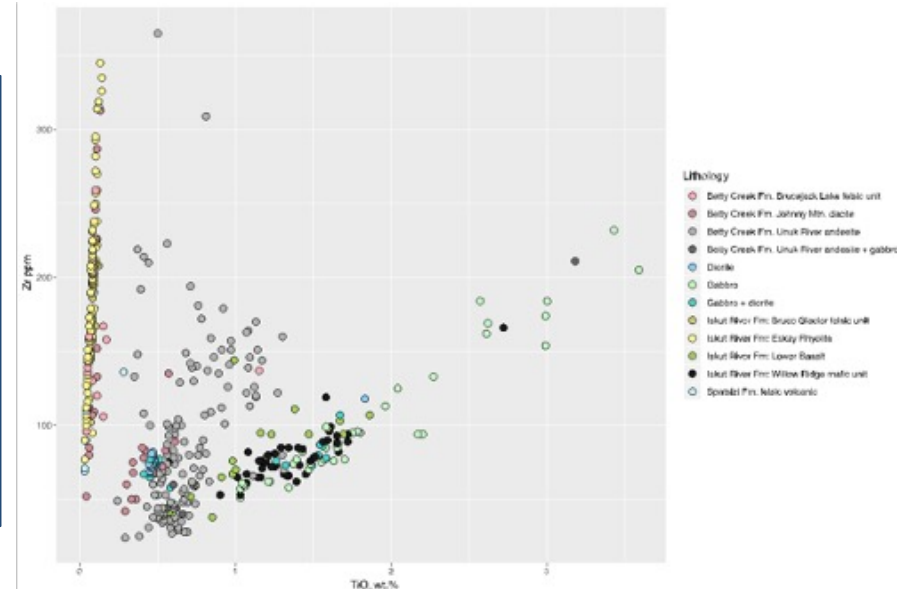
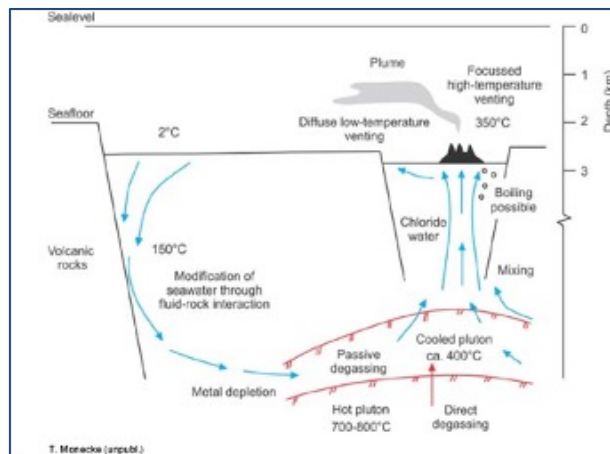


Our team has a comprehensive understanding of VMS deposits

Geochemical data is used to maximum effect

- Chemostratigraphy
- Hydrothermal alteration
- Pathfinder elements

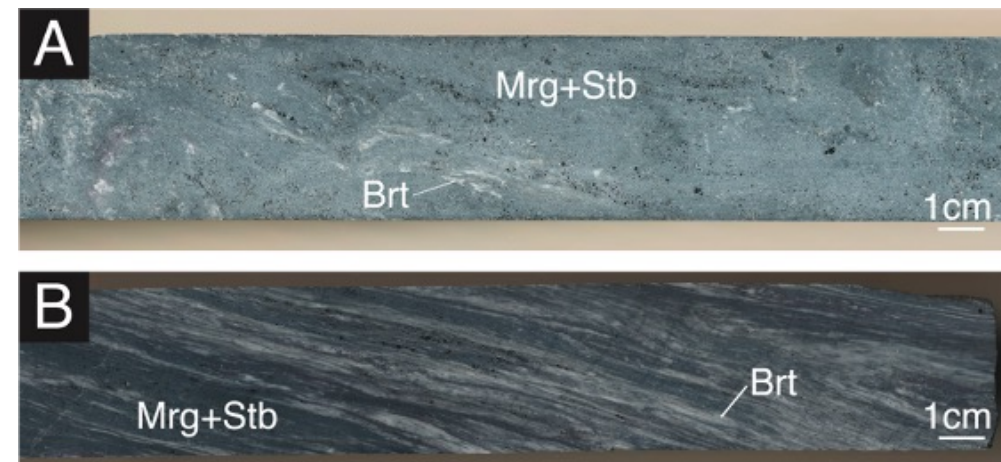
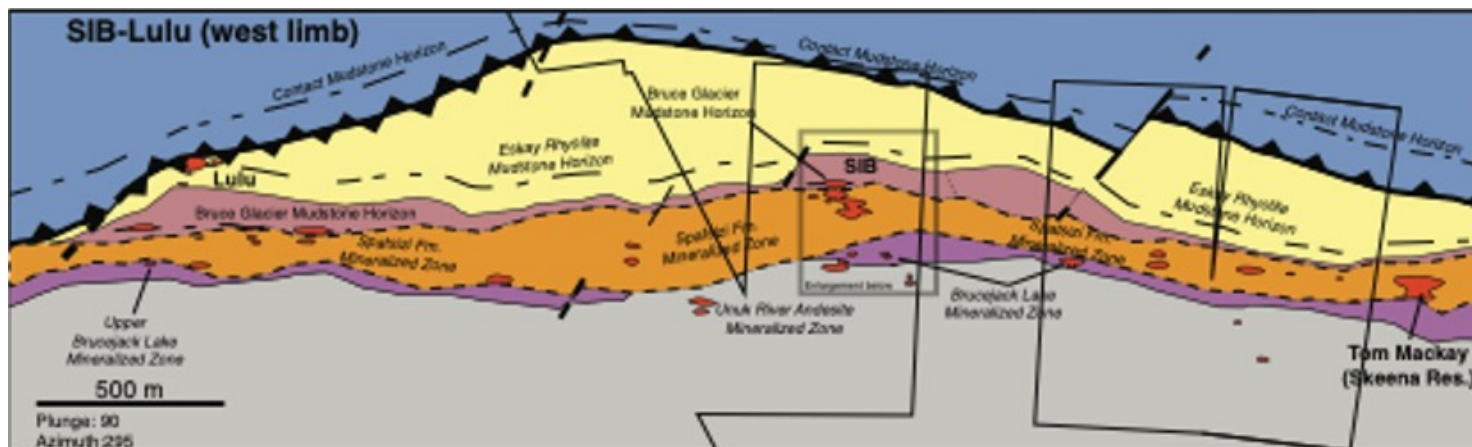
Anaconda-style mapping program



- A = Seafloor accumulation
- B = Synchronous seafloor/subseafloor accumulation + burial by lava
- C = Replacement within lava
- D = Replacement of volcanoclastic material
- E = Seafloor accumulation + burial by lava

- 4 km southwest along strike from Eskay Creek Mine
  - Part of the Eskay Creek trend of VMS mineralization
- Previous exploration focused on the “Eskay Creek” stratigraphic horizon and did not consider the potential for stacked VMS mineralization
  - Several Au- and Ag- bearing intercepts were never followed up on as they “didn’t fit the Eskay Creek model”
- Exploration for stacked VMS deposits will commence in 2023

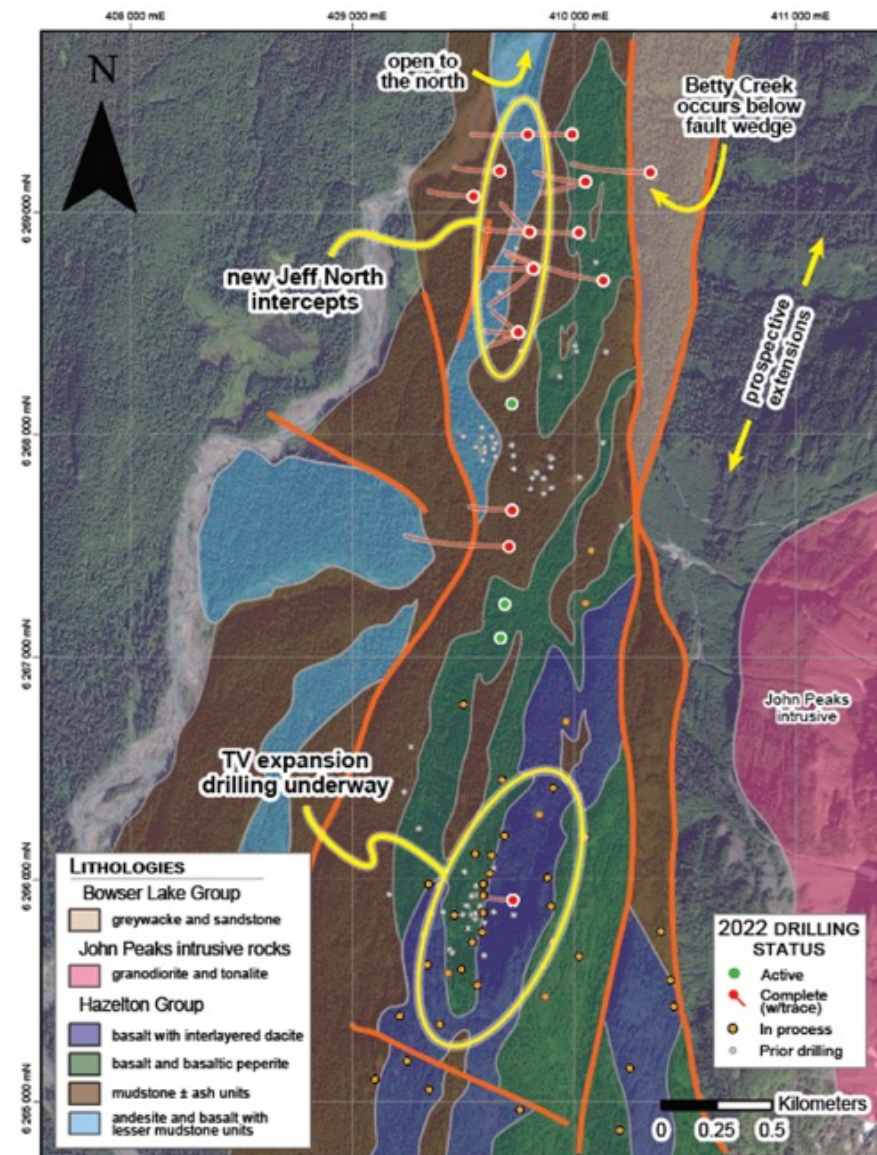
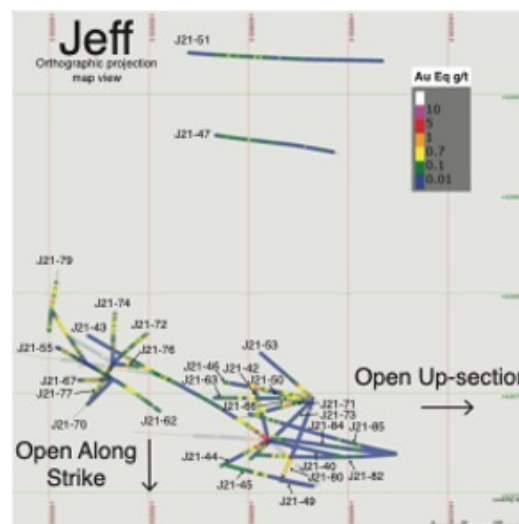
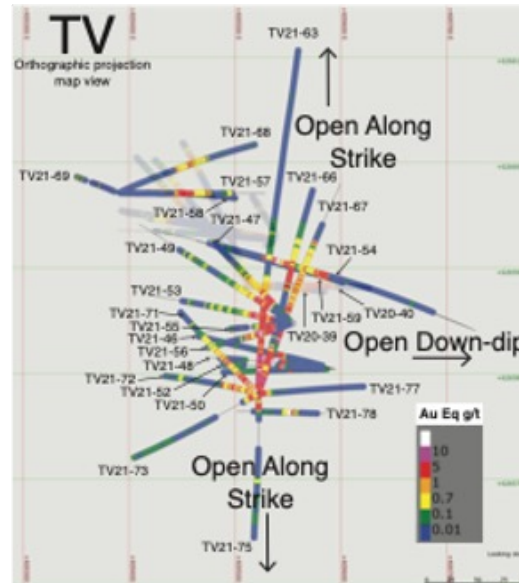
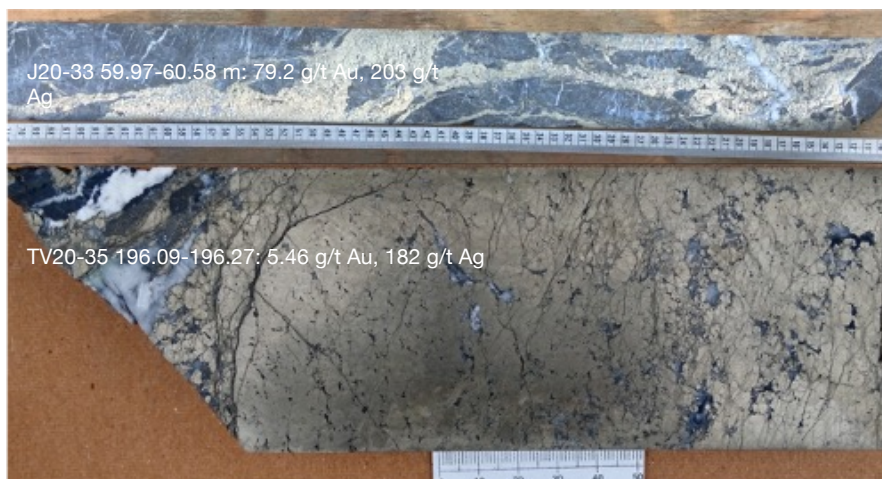
02-113



91-85



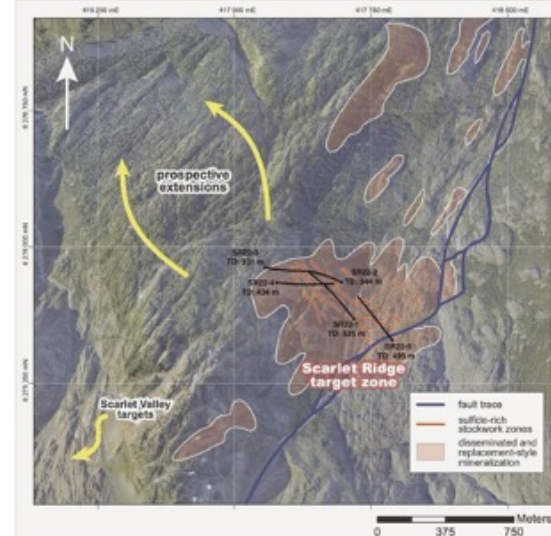
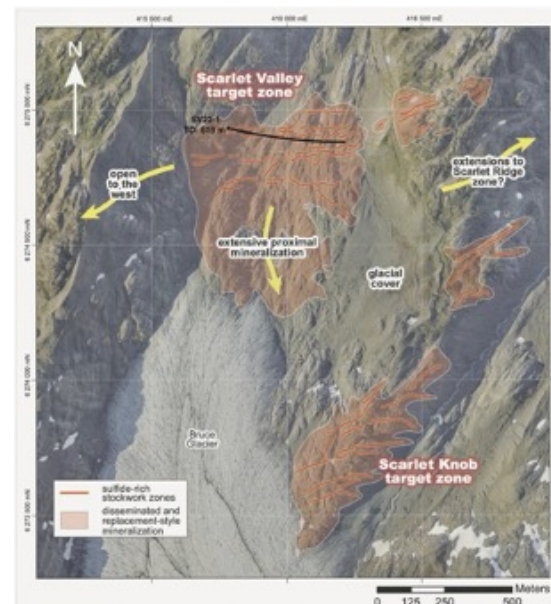
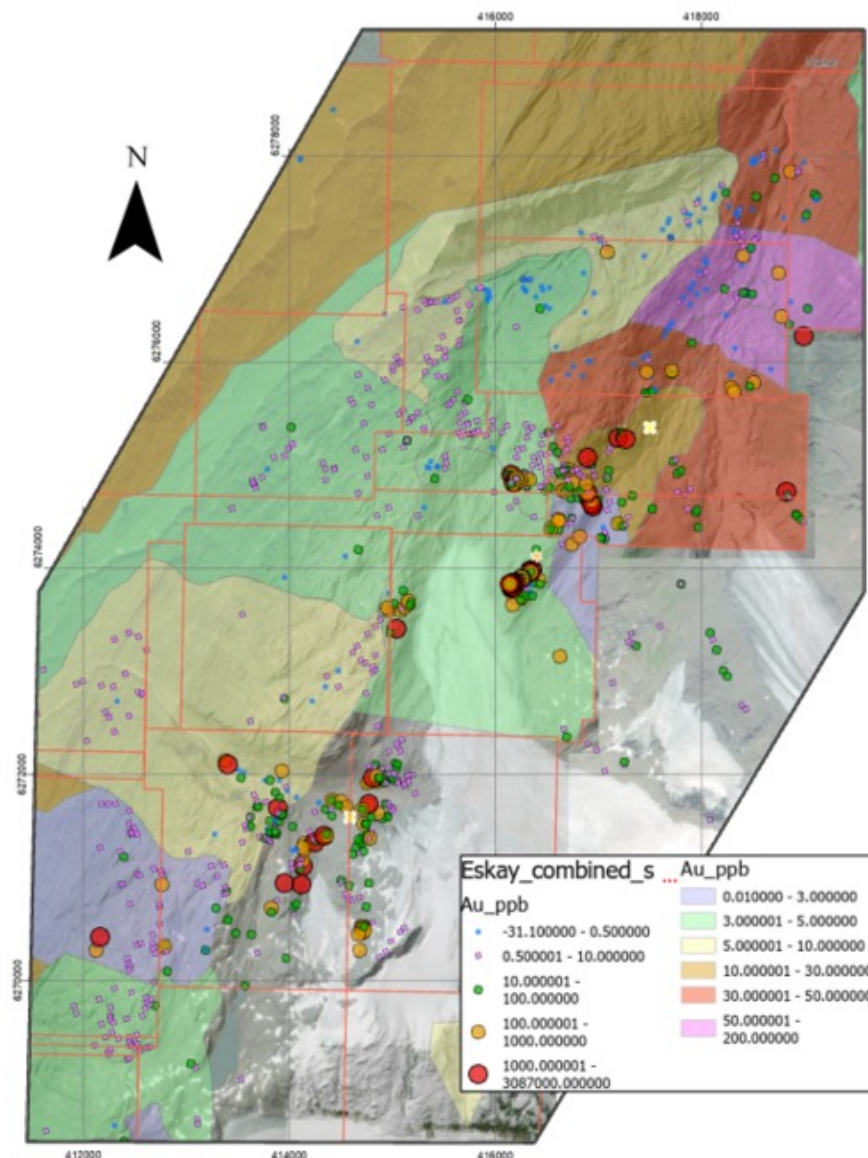
- 4 km trend of VMS mineralization focused around discrete volcanic centers
- TV has two massive sulfide horizons each fed by extensive stockwork zones
- Jeff and Jeff North are characterized by stockwork mineralization





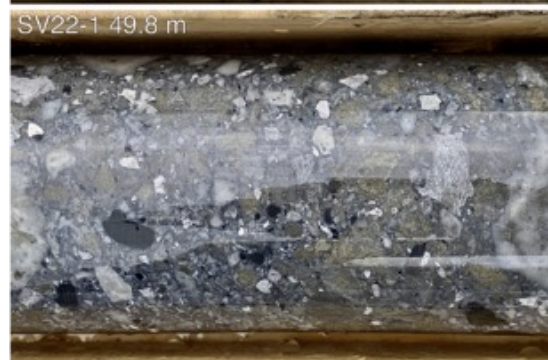
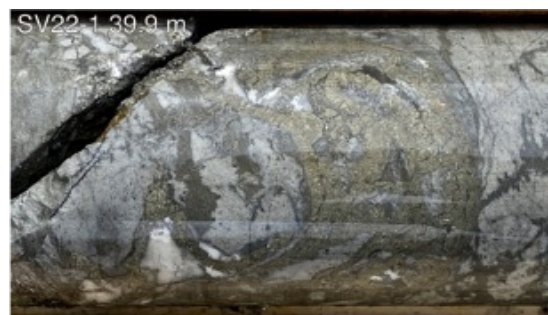
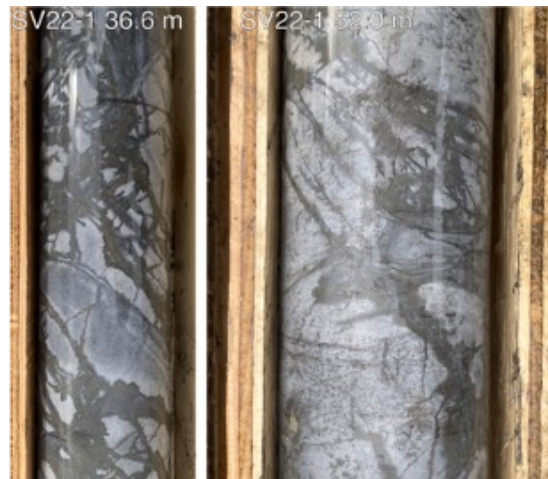
# Scarlet Ridge-Tarn Lake Trend

- Minimum 8.5 km trend of VMS mineralization
  - Concentrated along basalt and andesite dikes and sulfide replacement horizons
- Recent and historic rock chip sampling confirms the presence of Au and Ag mineralization
- Primary focus of the 2022 prospecting and mapping programs
- Exploratory drilling is currently underway



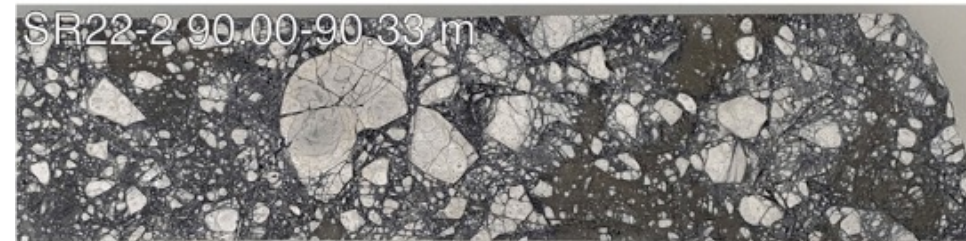
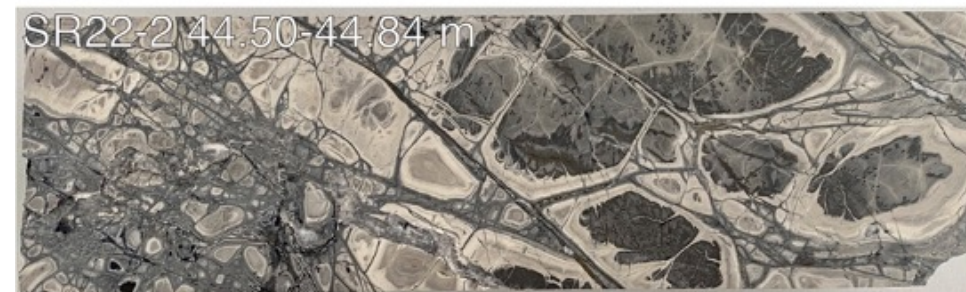
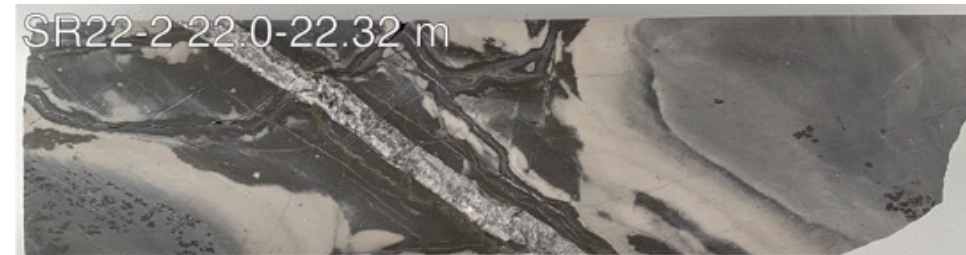


- Stockwork mineralization focused near basalt and andesite dikes
- Host rocks are rhyolite and rhyolite clast-bearing volcanoclastic debris flow deposits
- Replacement-style mineralization occurs within volcanoclastic debris flow breccia and coherent volcanic rocks
- Mineralization associated with intense hydrothermal alteration
- Handheld XRF indicates locally high concentrations of the pathfinder elements Ag, As, and Sb



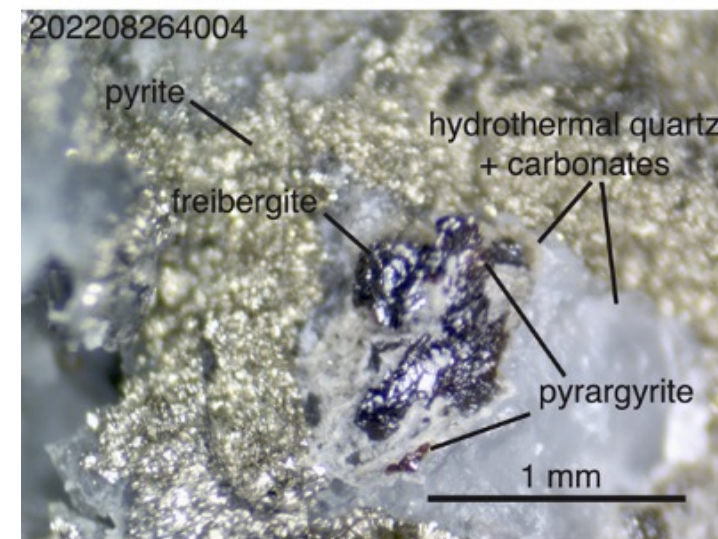
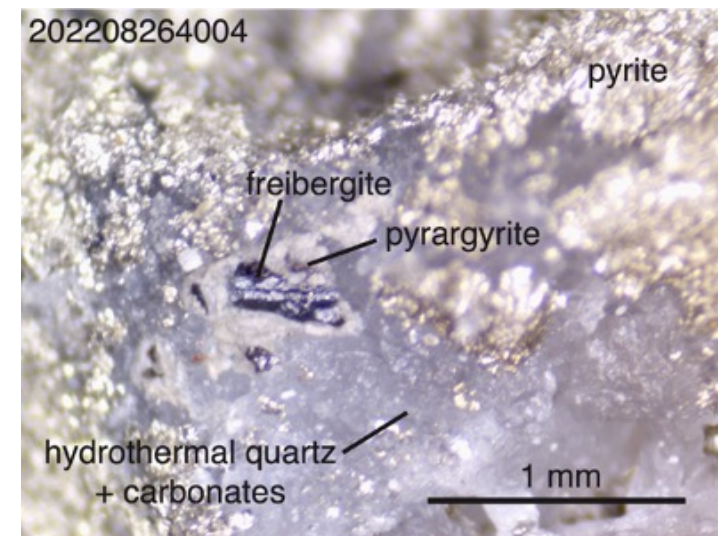


- Stockwork mineralization focused near basalt and andesite dikes
- Replacement-style mineralization occurs within volcaniclastic debris flow breccia and coherent volcanic rocks
- Mineralization associated with intense hydrothermal alteration





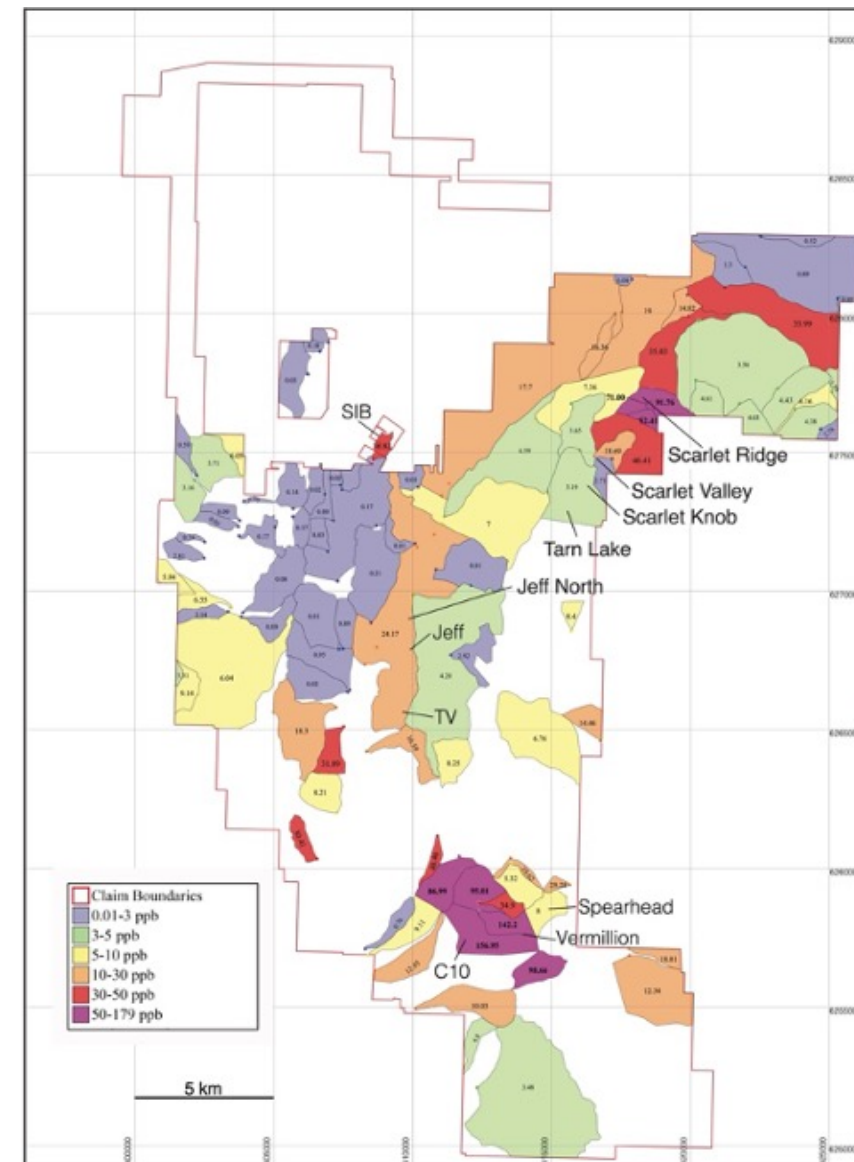
- Stockwork mineralization focused near basalt and andesite dikes
- Replacement-style mineralization occurs within volcaniclastic debris flow breccia and coherent volcanic rocks
- Mineralization associated with intense hydrothermal alteration
- Handheld XRF indicates locally high concentrations of the pathfinder elements Ag, As, and Sb







- Conduct targeted follow-up drill program along the Scarlet Ridge-Tarn Lake trend
- Data analysis and field work at the TV and Jeff showings will be performed to better understand structural complexities related to mineralization and enable targeting of potential new zones of mineralization
- Conduct extensive drilling at SIB-Lulu to follow-up on Au- and Ag-bearing intercepts that were dismissed because they “didn’t fit the Eskay model”
- Conduct field work and exploratory drilling at poorly-explored VMS targets property-wide
- Evaluate the potential for orogenic-type mineralization in the southern part of the property
- Evaluate the potential of Big Red for porphyry mineralization







[eskaymining.com](http://eskaymining.com)



**FOR MORE INFORMATION CONTACT:**

**Focus Communications**  
**Investor Relations**  
[info@fcir.ca](mailto:info@fcir.ca)  
+1 647-689-6041

[eskaymining.com](http://eskaymining.com)

TSX.V: ESK  
USA.OTC: ESKYF  
Frankfurt: KN7